

## INTERTIE 2 PIPELINE PROJECT

Dear Neighbor,

In 2008, the Clackamas County Board of County Commissioners (BCC) authorized construction of the RiverHealth Intertie 2 (pipeline) project. This project is in support of efforts underway to create adequate sewage collection and treatment capacity for residents and businesses in your wastewater service district, Clackamas County Service District No. 1 (CCSD #1), as mandated by the Oregon Department of Environmental Quality.

Known as the RiverHealth Capacity Management Program, the Intertie 2 pipeline, together with maintenance at the Kellogg Creek Water Pollution Control Plant in Milwaukie and expansion of the Tri-City Water Pollution Control Plant in Oregon City, will allow the transfer of wastewater flow from CCSD #1 to the Tri-City plant. This will help relieve operating issues at the Kellogg Creek Plant and mitigate spills into the Willamette River.

You are receiving this letter because your business or residence is located on or near the pipeline construction route. Construction on the pipeline is scheduled to begin this Summer 2010. You will be notified in advance should the construction impact access to your property for any length of time. We assure you that every measure will be taken to limit the disruptions to your operations or livability, and ask that you contact WES with any questions or concerns regarding this project. Every attempt will be made to limit traffic impacts, as construction will occur mostly in the public right-of-way.

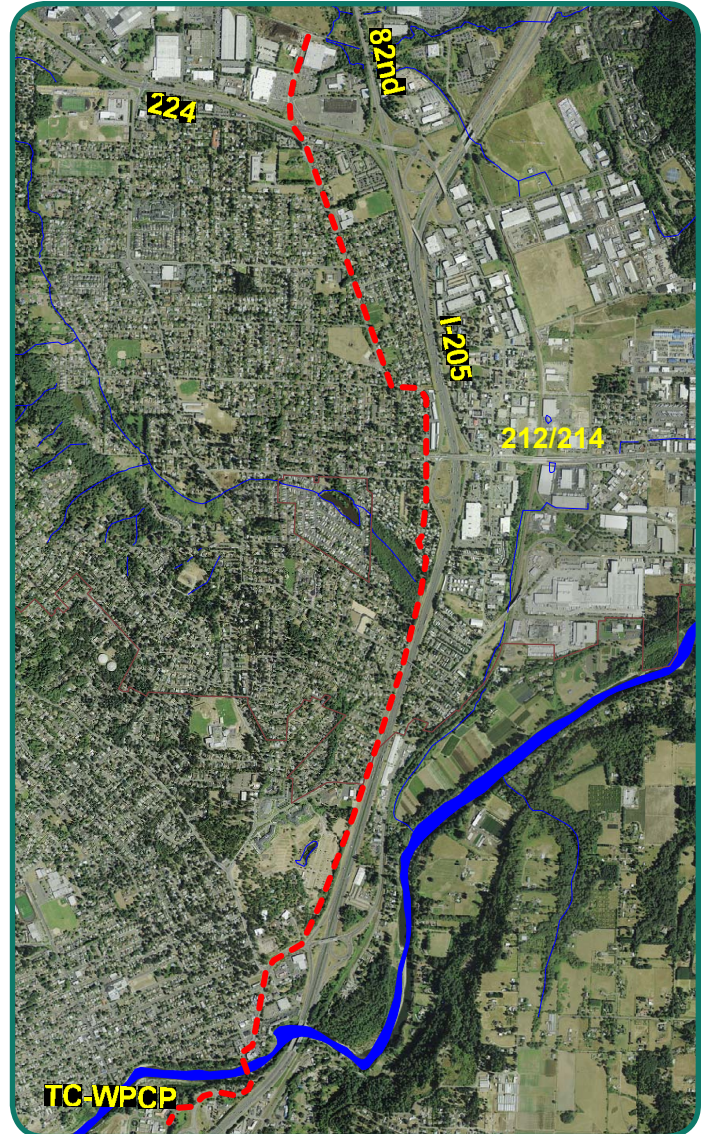
Thank you for helping CCSD #1 protect public health and the environment in Clackamas County.

### Route Options

The pipeline routing study began in August 2008 when the BCC authorized a contract with HDR Inc of Portland to assist Clackamas County Water Environment Services (WES) staff with identifying and ranking possible route options that were measured against a variety of criteria.

In January 2009, after public review and comment on the 11 route options, the BCC selected the Johnson Road/I-205 pipeline route.

For more information on the routing study please visit [www.RiverHealth.org](http://www.RiverHealth.org)



### Construction Timeline

Current Status: *Final Design*

Construction Start date: *May 2010*

Construction Anticipated End date: *November 2011*

### Contact Info

Dewayne Kliewer, P.E.

WES Project Manager

(503) 793-7291

[dewaynek@co.clackamas.or.us](mailto:dewaynek@co.clackamas.or.us)