

KEEPING YOUTH IN SCHOOL

H3S Goal: Healthy & Safe Individuals and Families

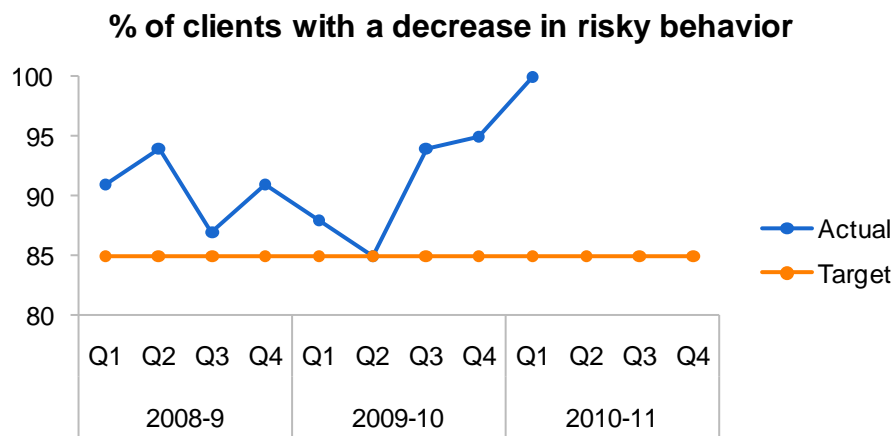
What we measure: % of students in PreventNet dropout prevention programs demonstrating a decrease in risky behaviors

How often we update these numbers: Quarterly

Why this measure matters: All youth should have the opportunity to make the choices that allow them to get educated, build a successful working career, and contribute to society. This should not depend on how much income their families make or whether they live in single-parent homes or homes where both parents work. These challenges can interfere with childrens' academic success and social growth. Fortunately, a decade of research demonstrates that community schools with after school activities and other prevention programs help youth improve their school performance, reduce risky behaviors and develop healthy social skills (National Institute on Out-of-School Time, 2009). In Clackamas County, targeted support through the PreventNet system of community schools helps youth make smart choices. We measure the decrease in risky behaviors by clients because this is an indicator of the positive benefit that youth gain from PreventNet. When youth stay in school and out of trouble, they win, and we all win.

Target for 2010-11: 85%

Results for July-September 2010: 100% of 32 students



What these numbers mean: We have met or exceeded our targets for the past two years. This means that the organizations that provide these services through PreventNet are having a positive impact on the lives of participating students. What is not visible on this chart is that in the most recent quarter all of our providers met or exceeded the 85% target.

What we will do next: Leverage additional dollars and build capacity to serve more youth through our PreventNet system.

What else influences this measure: The percentage of youth who enter the program with more risk factors, which influences the likelihood of success.

Source of data: Clackamas County Children Youth & Families