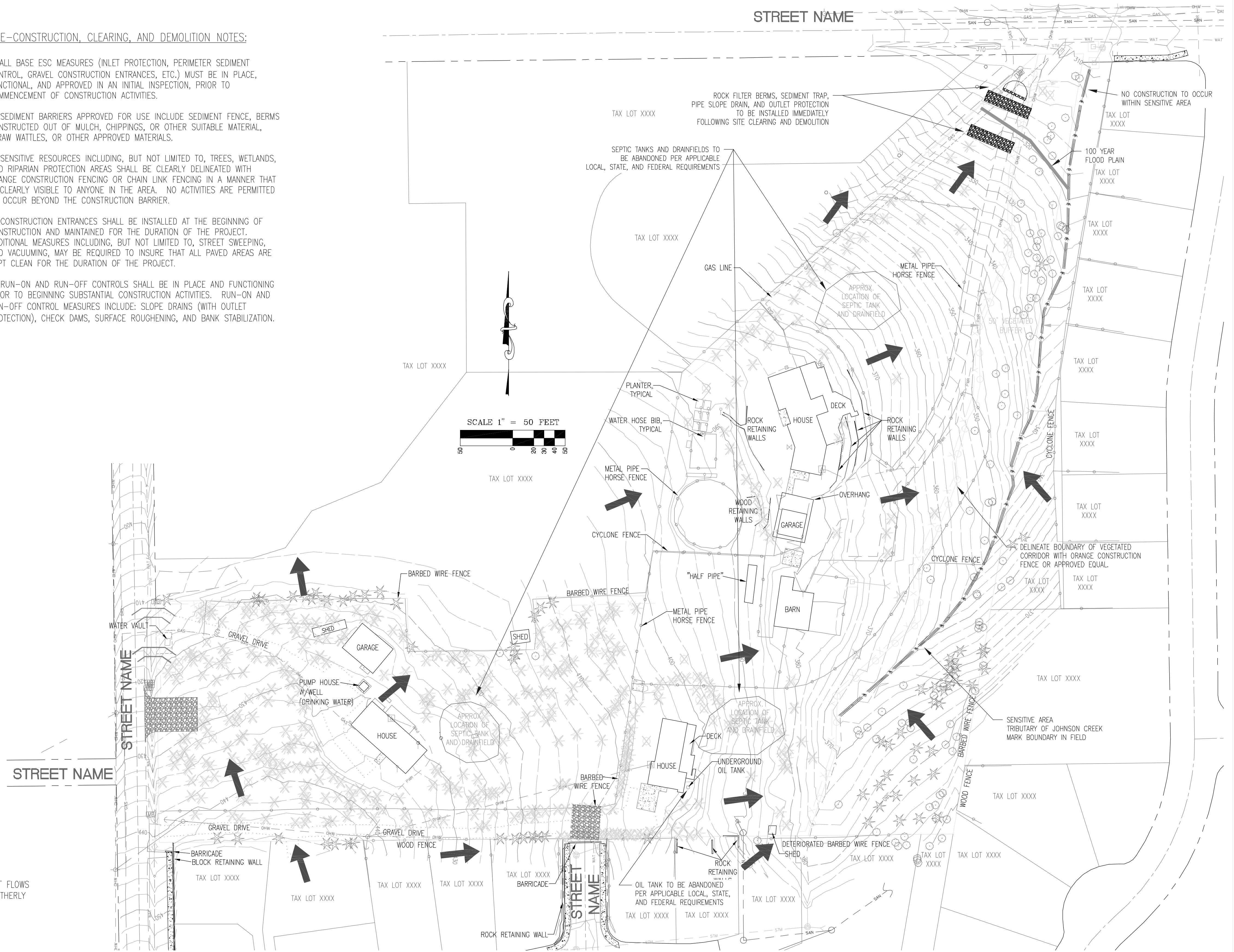


LEGEND

- EXISTING GROUND CONTOUR (2 FT)
- EXISTING GROUND CONTOUR (10 FT)
- FINISHED GRADE CONTOUR (2 FT)
- FINISHED GRADE CONTOUR (10 FT)
- EXISTING TREE TO REMAIN
- EXISTING TREE TO BE REMOVED
- SEDIMENT BARRIER (PERIMETER)
- SEDIMENT BARRIER (INTERIOR)
- ORANGE CONSTRUCTION FENCE
- INLET PROTECTION
- DIVERSION DIKE & SWALE
- CONCRETE WASH AREA
- OUTLET PROTECTION
- PIPE SLOPE DRAIN
- SEDIMENT TRAP
- CHECK DAM
- ROCK FILTER BERM
- CONSTRUCTION ENTRANCE
- TEMPORARY SLOPE STABILIZATION MEASURES
- LONG TERM SLOPE STABILIZATION MEASURES
- MATTING (GREENFIX STAW/COCONUT MAT TYPE: CFS072R)
- NEW IMPERVIOUS SURFACE
- DRAINAGE FLOW DIRECTION

PRE-CONSTRUCTION, CLEARING, AND DEMOLITION NOTES:

1. ALL BASE ESC MEASURES (INLET PROTECTION, PERIMETER SEDIMENT CONTROL, GRAVEL CONSTRUCTION ENTRANCES, ETC.) MUST BE IN PLACE, FUNCTIONAL, AND APPROVED IN AN INITIAL INSPECTION, PRIOR TO COMMENCEMENT OF CONSTRUCTION ACTIVITIES.
2. SEDIMENT BARRIERS APPROVED FOR USE INCLUDE SEDIMENT FENCE, BERMS CONSTRUCTED OUT OF MULCH, CHIPPINGS, OR OTHER SUITABLE MATERIAL, STRAW WATTLES, OR OTHER APPROVED MATERIALS.
3. SENSITIVE RESOURCES INCLUDING, BUT NOT LIMITED TO, TREES, WETLANDS, AND RIPARIAN PROTECTION AREAS SHALL BE CLEARLY DELINEATED WITH ORANGE CONSTRUCTION FENCING OR CHAIN LINK FENCING IN A MANNER THAT IS CLEARLY VISIBLE TO ANYONE IN THE AREA. NO ACTIVITIES ARE PERMITTED TO OCCUR BEYOND THE CONSTRUCTION BARRIER.
4. CONSTRUCTION ENTRANCES SHALL BE INSTALLED AT THE BEGINNING OF CONSTRUCTION AND MAINTAINED FOR THE DURATION OF THE PROJECT. ADDITIONAL MEASURES INCLUDING, BUT NOT LIMITED TO, STREET SWEEPING, AND VACUUMING, MAY BE REQUIRED TO INSURE THAT ALL PAVED AREAS ARE KEPT CLEAN FOR THE DURATION OF THE PROJECT.
5. RUN-ON AND RUN-OFF CONTROLS SHALL BE IN PLACE AND FUNCTIONING PRIOR TO BEGINNING SUBSTANTIAL CONSTRUCTION ACTIVITIES. RUN-ON AND RUN-OFF CONTROL MEASURES INCLUDE: SLOPE DRAINS (WITH OUTLET PROTECTION), CHECK DAMS, SURFACE ROUGHENING, AND BANK STABILIZATION.



THESE EROSION AND SEDIMENT CONTROL PLANS ASSUME "DRY WEATHER" CONSTRUCTION. "WET WEATHER" CONSTRUCTION MEASURES NEED TO BE APPLIED BETWEEN OCTOBER 1ST AND MAY 31ST.

* NOTE: PRE-DEVELOPED RUN-OFF SHEET FLOWS EASTERLY INTO ON-SITE DRAINAGE AND NORTHERLY ONTO ADJACENT PROPERTIES.

REVISIONS:

CLEARING AND DEMOLITION EROSION AND SEDIMENT CONTROL PLAN

ENGINEERING • PLANNING SURVEYING • FORESTRY
 LICENSED IN OR, WA & AK
ENGINEERING FIRM
 SHERWOOD, OR 97140 VANCOUVER, WASHINGTON
 PHONE: (503) 925-8799 FAX: (503) 925-8969
 www.eks-eng.com

DESIGNED BY:	AHH	DRAWING NO.:	ESC3-051
DRAWN BY:	DJM	SCALE:	AS NOTED
CHECKED BY:	AHH		
PREPARED FOR:	CLEAN WATER SERVICES 2550 SW HILLSBORO HIGHWAY HILLSBORO, OR 97123 PHONE: 503-681-3600 FAX: 503-681-3603		

PROJECT NAME
 WASHINGTON COUNTY OREGON
 TAX LOTS WASHINGTON COUNTY TAX MAP

DATE: _____
 PRELIMINARY DESIGN
 REMOVE FOR STAMPING
 JOB NUMBER 1527
 SHEET ESC-051