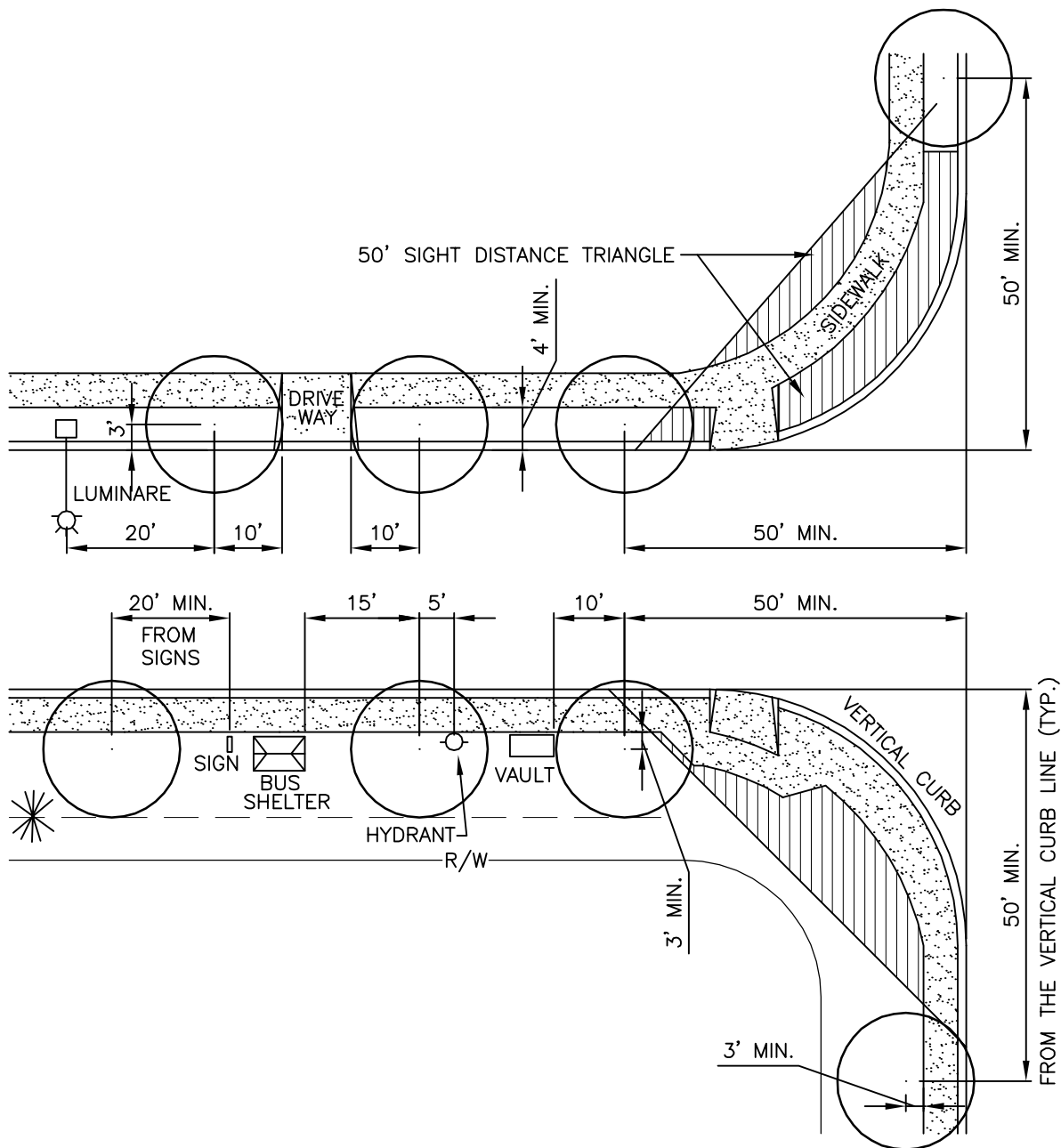



S:\Engineering\Traffic\Draft\Projects\Current\Projects\RoadwayStandards\TAR Standard drawings\Standard Drawings Revised 1.1.10.dwg L200.dwg



**NOTES**

1. WHEN LANDSCAPE STRIPS ARE REQUIRED:
  - a) MIN. DISTANCE FROM CENTER OF TREE TO FACE OF VERTICAL CURB SHALL BE 3 FT.
  - b) TREES SHALL BE STAKED IN A MANNER NOT TO OBSTRUCT SIDEWALK TRAFFIC.
2. SEE SECTION 255 FOR ADDITIONAL INFORMATION.
3. NO TREES WITH MATURE TRUNKS GREATER THAN 6 IN. DIAMETER (AS MEASURED AT GRADE) SHALL BE PLANTED WITHIN THE CLEAR ZONE. LARGER TREES MAY BE APPROVED FOR PLANTING OUTSIDE THE CLEAR ZONE AREA. NO TREES SHALL BE PLANTED WITHIN THE 50 FT. SIGHT DISTANCE TRIANGLE AT INTERSECTIONS. ALL PLANTINGS WITHIN 50 FT SIGHT DISTANCE TRIANGLE SHALL HAVE A MATURE HEIGHT LESS THAN 24 IN.

REVISION	DATE	BY	DEPARTMENT OF TRANSPORTATION AND DEVELOPMENT		APPROVAL DATE: 1/1/10	SCALE: N.T.S.	STANDARD DRAWING
			150 BEAVERCREEK ROAD OREGON CITY, OR 97045	CLACKAMAS COUNTY	<b>STREET TREE LOCATION</b>		<b>L200</b>