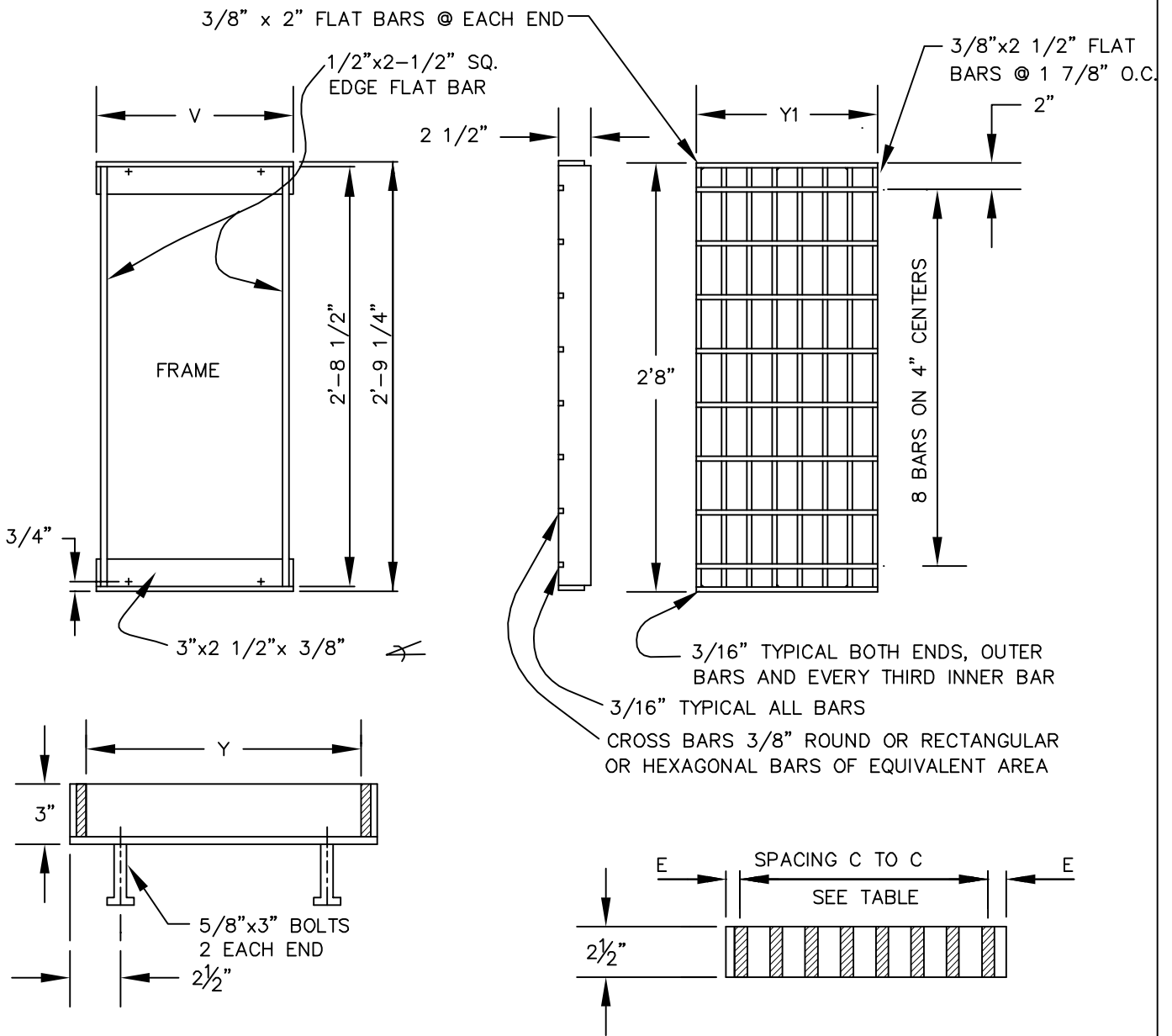



S:\Engineering\Traffic\RAFT\Projects\Current\Projects\RoadwayStandards\Standard Drawings\Standard Drawings Revised 1.1.10\dwgs\S100-S960.dwg



CATCH BASIN TYPE	V	Y	Y1	E	SPACING C TO C	NO. OF BARS PER GRATE	REMARKS
GB-2	2'-4 3/4"	2'-3 3/8"	1'-1 1/2"	5/8"	1 3/4"	8	2-GRATES
D	2'-4 3/4"	2'-3 3/8"	2'-3"	1 1/2"	3"	9	
GB	1'-3 1/4"	1'-1 7/8"	1'-1 1/2"	5/8"	1 3/4"	8	1-GRATE

**NOTES**

- MATERIALS AND FABRICATION SHALL CONFORM TO THE CURRENT APWA STANDARD SPECIFICATIONS.
- 3/8" CROSS BARS SHALL BE FLUSH WITH THE GRATE SURFACE AND MAY BE FILLET WELDED, RESISTANCE WELDED OR ELECTROFORGED TO BEARING BARS.
- GB CATCH BASIN FOR USE WITH CURB INLET CATCH BASIN WITH GRATE ONLY.

<table border="1"> <thead> <tr> <th>REVISION</th> <th>DATE</th> <th>BY</th> </tr> </thead> <tbody> <tr><td> </td><td> </td><td> </td></tr> <tr><td> </td><td> </td><td> </td></tr> <tr><td> </td><td> </td><td> </td></tr> <tr><td> </td><td> </td><td> </td></tr> </tbody> </table>	REVISION	DATE	BY													DEPARTMENT OF TRANSPORTATION AND DEVELOPMENT  150 BEAVERCREEK ROAD OREGON CITY, OR 97045		APPROVAL DATE: 1/1/10  <b>STANDARD CATCH BASIN FRAME          AND GRATE DETAILS</b>	SCALE: N.T.S.  <b>S400</b>	STANDARD DRAWING
REVISION	DATE	BY																		