



The Clackamas County Sheriff's Office



Neighborhood Watch

VOL. 4, ISSUE 4 • OCTOBER / NOVEMBER / DECEMBER 2007

N E W S

What Neighborhood Watch is:

A crime-prevention program that encourages neighbors to get to know each other and their routines so that any out of place activities can be observed and recognized for what they are, then reported and investigated if necessary.

What Neighborhood Watch is not:

A program designed for participants to undertake personal risks to deter crime.

SHERIFF'S KEY PHONE NUMBERS

Emergency: 911

24-hour

Non-Emergency:
(503) 655-8211

Business Number:
(503) 655-8218

Sheriff's Office Web site:
www.clackamas.us/sheriff

Crime Prevention Through Environmental Design

It might be time to take a fresh look at the exterior of your home from the standpoint of a burglar:

If I were a burglar, can I get inside without being seen? Are the doors and windows easy to force open? Does it look like everyone is gone during the day or away on vacation? Do they have a dog? What about an alarm? Can police or neighbors see the front entrance from the street?

Crime Prevention Through Environmental Design (or CPTED) is a concept that has been around for hundreds of years. By definition, CPTED is the proper design and effective use of the built environment that can lead to a reduction in the fear and incidence of crime and an improvement in the quality of life. Criminals look for the easy target. Do what you can to deter them from choosing your home.

Here are some simple CPTED recommendations that can reduce your risk of becoming a victim:



- All doorways that open to the outside should be well lit and the front door should be at least partially visible from the street.
- Outside doors should be equipped with a good quality, 1" minimum deadbolt and a heavy duty strike plate. This is also true of interior garage doors.
- Exterior door hinges should be located on the interior side of the door.
- If you have sliding glass doors, place a dowel behind the door – sliding glass doors are vulnerable because they usually only have a latch, not a true locking mechanism.
- All windows should have a lock.
- Landscaping should not provide hiding places or blind spots.
- Create a feeling that your property is your territory by creating transition zones – define property lines with plantings, pavement treatments or fences. This sends a psychological message that everything beyond these barriers is private property.
- Your street address should be easily seen from the street and well lit at night in the event that law enforcement, the fire department or an ambulance is called to your home.
- Keep the appearance of your home neat – keep foliage trimmed, don't allow garbage to collect in your yard, put children's toys and garden equipment away. A home that looks well cared for sends a message that the people living there pay attention to their surroundings.
- Of course, as always, be aware of suspicious people and activities. If something feels wrong, it well could be a problem. Report these suspicious incidents to police. ♦

The Clackamas County Sheriff's Office Citizen Volunteer Auxiliary/Neighborhood Watch Program publishes the NEIGHBORHOOD WATCH NEWS quarterly. To learn more about volunteering for the Sheriff's Office, go to www.1-800-Volunteer.org and look up "Crime/legal" in the Issue area drop down box, with zip code 97045. This newsletter can be found online at the Sheriff's Office Web site, www.clackamas.us/sheriff. If you need additional copies, you may call the Crime Prevention Unit at (503) 353-4441. To receive further information or to join the Neighborhood Watch Program contact: **Community Service Officer Sara McClurg**, Crime Prevention Unit, (503) 353-4441 or CrimePrevention@co.clackamas.or.us.

12800 SE 82ND AVE. • CLACKAMAS, OR 97015
(503) 655-8218 • FAX (503) 655-8549 • www.clackamas.us/sheriff

Metal Theft

Theft of copper and aluminum is still on the rise in Clackamas County.

Theft of copper and aluminum is still on the rise in Clackamas County. Many forms of scrap metal have doubled in price over the past few years due to a high demand for metal in Asia. Everyone pays for this problem – not only businesses are victims; increasingly, public areas and residential homes are being hit. Thieves have taken copper wire, brass tubing, irrigation pipes, road signs, bleachers, utility meters, highway guard rails, equipment parts, aluminum gutters and downspouts, and siding. Most metal theft is committed by drug addicts looking for a quick profit by selling scrap metals.

Oregon house bill 3026, which stipulates that scrap metal buyers get a copy of the seller's driver's license and take a video of the transaction, should certainly help to cut down on this crime, but so far metal thieves are not deterred. The Sheriff's Office is looking for your help in reporting suspicious activity that could help to catch these criminals in action.

Some examples of activity to



look for are:

- **Report people to law enforcement who seem to be transporting a great deal of scrap metal.** Get a vehicle description, license plate number and description of the person(s) associated with the vehicle if possible.
- **Report people who seem to be trying to remove publicly**

owned metals like road signs and guard rails.

- **If you see someone stripping insulation from copper wire, call police.**

Most scrap metal dealers will not pay top dollar for insulated wire and metal thieves often find a secluded place to strip wire before selling it to a dealer.

- **If you see someone carrying away scrap metal from**

a construction site after hours, report this activity to police.

Remember that some thieves are clever and will wear construction workers clothing in order to appear they are doing business as usual.

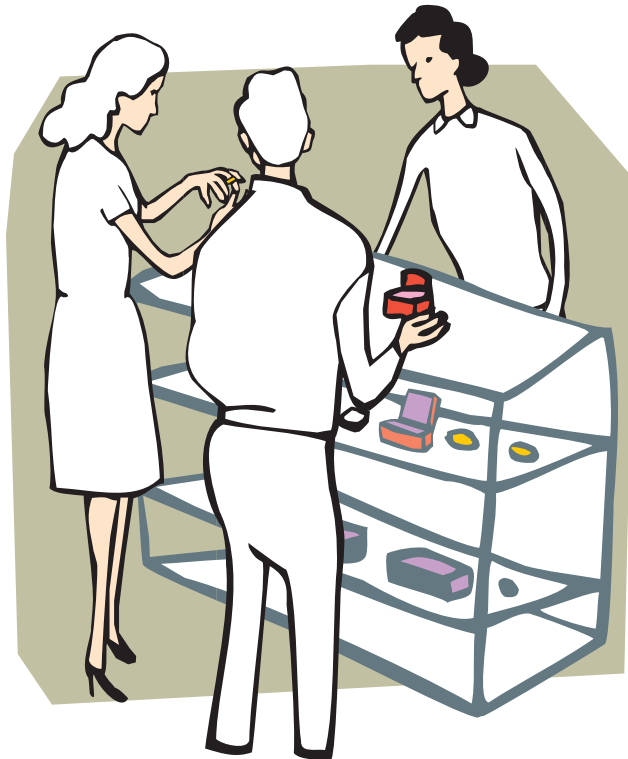
- **In general, if it looks wrong, report it to police** — but

always do so in a way that does not put you at risk. ♦

Shopping Stress Can Make You Vulnerable

The shopping season is here! Christmas and other holidays are coming and most of us anticipate spending a lot of our income on gifts for friends and family. The average American will spend roughly \$800.00 on gifts and entertaining in the holiday season of 2007. This is a bonus season for thieves! They plan to make more profit at this time of year than any other. After all, they have holiday expenses too. They count on you to leave packages in your car for them to steal. Also, it is a stressful time of year and many of us let down our guard and our good judgment is compromised. You can take some simple steps to make sure you have a safe shopping experience:

- 1) Plan your holiday shopping well in advance and shop as early in the day as possible.** If you shop at a mall, try to shop with another person so that you are not alone. Avoid shopping when you are tired, under stress or in a hurry.
- 2) If you must put your packages in**



your car and leave them unattended, always put them in the trunk. If you have a vehicle without a trunk or other hidden compartment and your only choice is to leave packages out in plain sight, drop off your packages at home or leave a passenger to watch your merchandise until you return home. If you just want to drop off your packages and then return to the mall, move your car to another parking space. You never know when someone

has been watching you and is just waiting for you to leave.

- 3) Only carry the credit/debit cards and money you will need.** Do not carry large amounts of money. Also, if you put gift cards into your purse or wallet, remove them and put them in a safe place as soon as you get home.
- 4) Don't use a video arcade or toy store as a babysitter for your child.** 100,000 children are abducted every year,

often from shopping malls and department stores, according to the Center for Missing and Exploited Children.

5) Be aware of the people around you while you are shopping. Criminals are attracted to crowded shopping malls and stores where they can target distracted and hurried shoppers for their purses, wallets and packages. If you carry a wallet, put it in your front pants or coat pocket. If you carry a purse, keep it close to your body with the opening facing toward you. If you are walking with another person, keep your purse between you.

6) ATMs are another popular place for criminals to commit crimes during the holidays. Memorize your PIN number and never share it with others or keep it on a scrap of paper in your wallet. Choose an ATM that is well lit and highly visible. If someone seems to be loitering by the ATM with no clear purpose, do not use the machine. Look around while making withdrawals and discontinue your transaction if someone near you seems suspicious. ♦

Crosswalks and School Zones

In the past several years there has been a lot of confusion in Oregon about cross walk and school zone laws. Here are the current laws for cross walks:

When turning at a traffic signal, drivers must:

Stop and remain stopped for pedestrians until they have cleared the lane into which your vehicle is turning and at least 6 feet of the next lane.

At any other crosswalks – whether marked with paint or unmarked – drivers must:

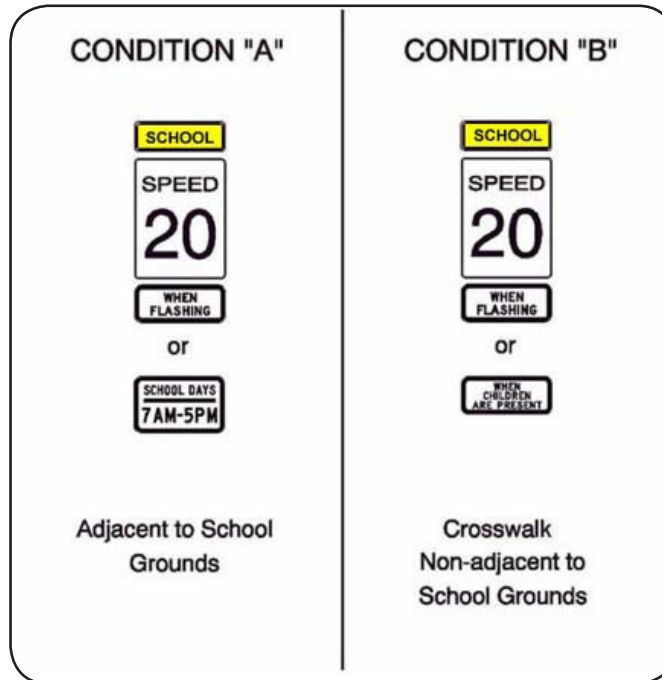
Stop and remain stopped for pedestrians until they have cleared the lane in which you are traveling (or into which you are turning) and the next lane.

Stop and remain stopped for students as you are directed by a crossing guard.

Stop and remain stopped for a blind pedestrian using a white cane or a guide dog until the pedestrian is completely across the roadway.

If a pedestrian is in a safety buffer when the vehicle enters the crosswalk, the driver can be cited for a fine over \$200.

When turning at a signal, it's your lane plus six feet:
Stop for the pedestrian, who must clear



the lane into which the vehicle is turning and at least 6 feet of the next lane, before you proceed.

At any other crosswalk, it's your lane plus the next lane: Stop for the pedestrian, who must clear the lane in which the vehicle is traveling or turning and at least the next lane, before you proceed.

According to the Oregon Department of Transportation, 75% of driver errors in motor vehicle-pedestrian crashes are a failure of drivers to yield to the pedestrian. And half of the pedestrians who are struck by

vehicles are hit while they are in a crosswalk.

House Bill 2840 for speed laws in school zones has been modified, effective July 1, 2006. The new law does away with the "At All Times" school zones and has been replaced by two categories of school zones for those adjacent and crosswalks not adjacent.

School zones on roadways adjacent to school grounds can be either:

- "When Flashing"; or
- "School Days 7AM to 5PM"

Those school zones at a school crosswalk away from school grounds can be either:

- "When Flashing"; or
- "When Children are Present"

Be aware of these different school zone requirements and be careful to read the school zone signs for proper speed limit requirements. Also, the signs that are posted as "When Flashing" are on timers for normal school hours, but can be modified for school events such as evening and weekend sporting events. Always slow down when these lights are flashing. ♦